

State of Wyoming Corner Record

(In compliance with the CORNER PERPETUATION AND FILING ACT, Wyoming Statutes, 1997 Section 33-29-140 et. seq., and the Rules and Regulations of the Board of Professional Engineers and Professional Land Surveyors)

Reverse side of this form may be used if more space is needed.

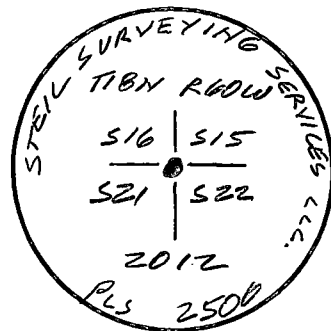
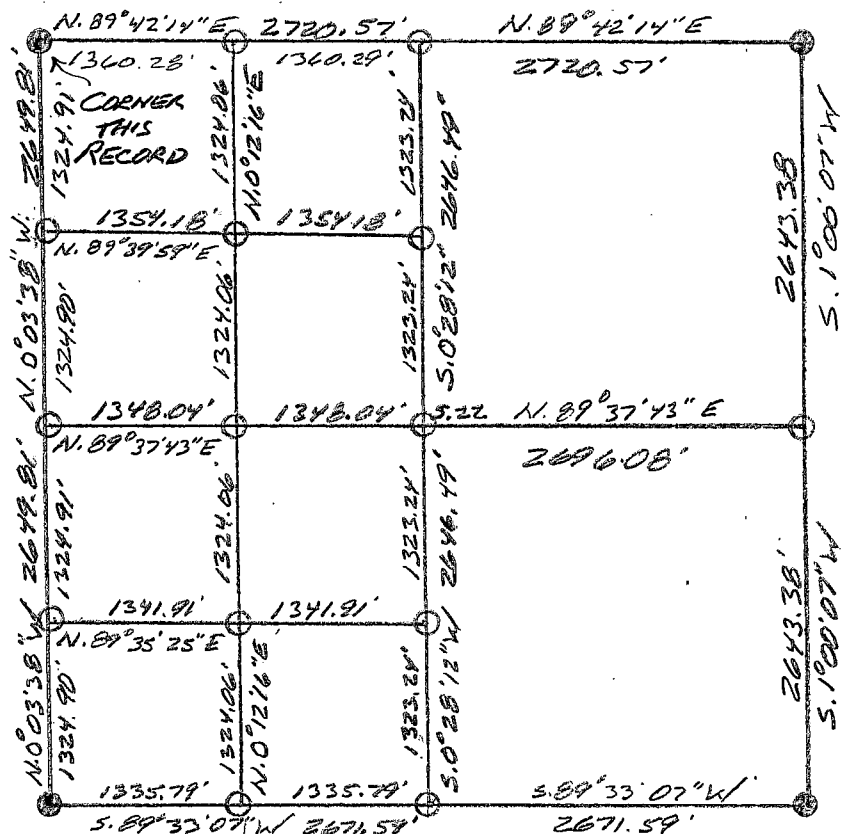
Record of original survey and citation of source of historical information (if corner is lost or obliterated). Description of corner monumentation evidence found and/or monument and accessories established to perpetuate the location of this corner. Sketch of relative location of monument, accessories, and reference points with course and distance to adjacent corner(s) (if determined in this survey). Method and rationale for reestablishment of lost or obliterated corner.

RECORD: SET A SANDSTONE 16X11X6, 10 INCHES DEEP MARKED WITH 3 NOTCHES ON EAST SIDE, 3 NOTCHES ON SOUTH SIDE FOR CORNER TO SECTIONS 15, 16, 21 AND 22.

MONUMENT FOUND: FOUND OLD FENCE CORNER CUT OFF. HELD AS BEST AVAILABLE EVIDENCE AS TO WHERE CORNER USED TO BE.

MONUMENT SET: SET A 5/8" X 24" REBAR WITH A 3/4" ALUMINUM CAP WITH THE CAP STAMPED AS SHOWN. MONUMENT LIES 0.7' WEST OF OLD POST.

REFERENCES: NO REFERENCES WERE SET.



Date of Field Work: 4-14-12

Office Reference: 12187

Monument Inscription

Cross Index Plat

Firm/Agency, Address

STEIL SURVEYING SERVICES LLC
1102 WEST 19th STREET
CHEYENNE WY 82001

Telephone Number: **(307) 634-7273**

This corner record was prepared by me or under my direction and supervision.

SEAL & SIGNATURE



Corner Name NORTHWEST COR Section 22 T 18 N, R 60 W, 6th P.M.

Cross-Index No.: N-13

County: LARAMIE Wyoming

SBRPEPLS/PLSW: March 1994; PLSW January 1998



RECP #: 733720

RECORDED 6/22/2018 AT 2:03 PM BK# 2590 PG# 497
 Debra K. Lee, CLERK OF LARAMIE COUNTY, WY PAGE 1 OF 1